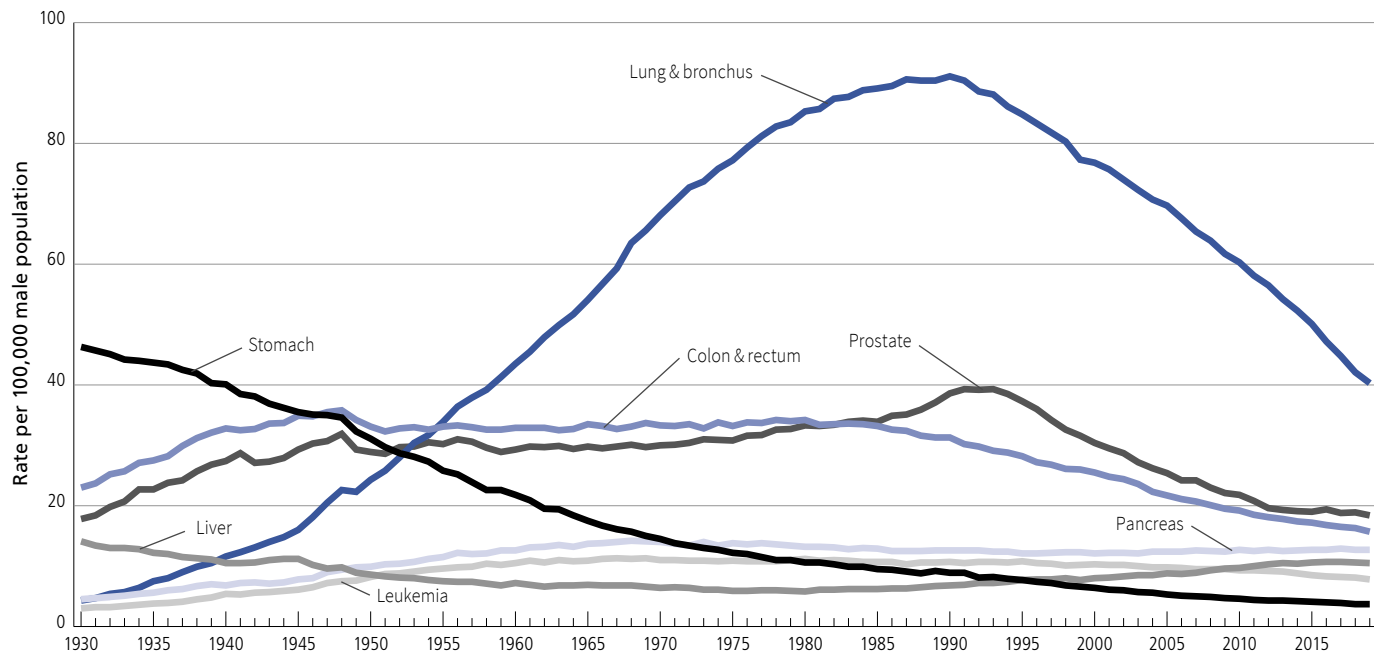


Figure 1. Trends in Age-adjusted Cancer Death Rates* by Site, Males, US, 1930-2019



*Per 100,000, age adjusted to the 2000 US standard population. Note: Due to changes in ICD coding, numerator information has changed over time. Rates for cancers of the liver, lung and bronchus, and colon and rectum are affected by these coding changes.

Source: US Mortality Volumes 1930 to 1959, US Mortality Data 1960 to 2019, National Center for Health Statistics, Centers for Disease Control and Prevention.

©2022, American Cancer Society, Inc., Surveillance and Health Equity Science